

Stainless Steel



Stainless Steel
Sanitary Ware and
Accessories



Stainless Steel
Security Systems



Stainless Steel
Kitchen Surfaces



Purus stainless steel sanitary ware, kitchen work tops and accessories are manufactured in a carefully thought out way with solid design and structure: This makes them easy to maintain and very difficult to damage.

Purus design their products to make public lavatories/kitchens/hospitals and prison cells functional and hygienic with a modern design aspiration. We also make WC pans, water free urinals, washbasins, paper holders, soap dispensers to name a few. The way in which Purus can engineer bespoke design for you can lead to low maintenance and longevity. Resulting in savings in rooms which are exposed to misuse and criminal damage.



PURUS IS A MARKET LEADER IN EUROPE



Floor gullies



Indoor waste systems



Stainless steel sanitary ware



Stainless steel fittings

PURUS

Purus is a market leader in Scandinavia in the manufacturing and sales of plumbing and interior decoration stainless steel products.

More than 40 years experience in the development and manufacturing of both standard and custom-made solutions in stainless steel has made Purus the leading supplier and partner for design consultants, end users and Architects with strong requirements for functionality, hygiene and durability.

Purus's area of specialisation is for sturdy and solid (vandalism-safe) sanitary product solutions available in standard designs, special measurements and bespoke made.

The product range consists of:

- Sanitary ware: A substantial product program including WC-Pans, urinals, washbasins, troughs with practical and vandal-safe fittings
- Washbasins and tables
- Cabinets and shelves
- Outlet systems, separators etc.

Within all of the above product areas we have substantial experience in collaborating with design consultants and end users regarding special solutions and adjustments, which ensures an optimal solution for all types of projects.

Through the years we have delivered standard and custom-made solutions to the Prison Service and a range of construction projects with catering centres, restaurants, hospitals, institutions and sports centres all over Europe.

Purus is sold throughout the plumbing industry in the world.

Read more on www.purus.se/gl



The hygienic workplace

Catering centres, hospitals and laboratories set requirements for sturdy and hygienic solutions for drainage systems, sink bowls, work tops and the overall interior design of the room. Purus has perfect and flexible solutions for this.

Purus work tops can be manufactured with many different types of sink bowls with quality and design matching any need. The sink bowls are placed precisely where needed, and edges and piping are made according to the task at hand.

Purus has a comprehensive program in oil and sediment traps, as well as gully solutions with a great capacity to match design aspirations in any environment.





The practical kitchen and laundry room

Sluicing, effluent and laundry is best handled in a corrosion-resistant environment. Purus has the products for this type of design and can meet functionality and quality requirements.

The stainless steel cabinets and shelves from Purus delivers flexible, sturdy and hygienic storage solutions for many types of rooms for public institutions and in private homes. These are also available in both standard and special measurements with bespoke service and design.

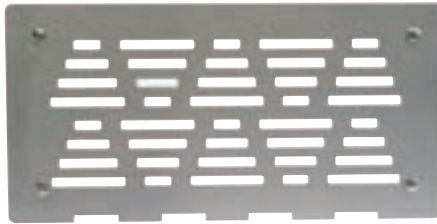




Sport, spa and leisure

The functionality and performance required in public shower areas and wet rooms is substantial. Purus has a comprehensive program for solving sanitary tasks:

Large capacity line drainage systems, designed gullies, sanitary solutions in a variety of classic and modern designs. Possibilities are numerous and the list of references is very long.



Useful fittings and Accessories

Soap dispensers, paper holders, hot air dryers and waste storage are products which require carefully thought out and sturdy solutions for public places?

Purus offers standard and a specially bespoke designed range of fittings; the demanding use placed on this type of equipment in public places has been taken into consideration.

Purus SP fittings are manufactured in vandalism-safe quality and are resistant to most public environments.

Purus solves the problem once and for all! That's why there is a 10 year warranty against functional failure.





Heavy-duty and safe stainless steel sanitary equipment with special solutions for different environments.





LAVATORIES AND URINALS

Toilets

Purus Stainless steel toilets are practical for surroundings with tough requirements for durability, hygiene and the possibility for adjustments. For example in public toilets, sports centres, restaurants and public institutions. Stainless steel toilets are also an interesting alternative in specially designed environments such as high and low level security places.

V130 S-trap

ART. no: 796 90 18
Material: Stainless steel AISI 304
Mounting: On floor
Water connection: 1/2"
Outlet connection: Ø 110 mm to floor
Flushing amount: 6 litres
Approved according to DIN* and VA**



V130 VH

ART. no: 796 90 22
Material: Stainless steel AISI 304
Mounting: In wall
Water connection: 3/8"
Outlet connection: Ø 102 mm to wall
Flushing amount: 6 litres
Approved according to DIN* and VA**



V130 P-trap

ART. no: 796 90 19
Material: Stainless steel AISI 304
Mounting: On floor
Water connection: 1/2"
Outlet connection: Ø 110 mm to wall
Flushing amount: 6 litres
Approved according to DIN* and VA**



V131

ART. no: 796 90 26
Material: Stainless steel AISI 304
Mounting: In wall
(wall attachment enclosed)
Water connection: Connector 38-45 mm
Outlet connection: Ø 102 mm



V130 S-trap HCP

ART. no: 796 90 20
Material: Stainless steel AISI 304
Mounting: On floor
Water connection: 1/2"
Outlet connection: Ø 110 mm to floor
Flushing amount: 6 litres
Approved according to DIN* and VA**



V131 HCP

ART. no: 796 90 28
Material: Stainless steel AISI 304
Mounting: In wall
(wall attachment enclosed)
Water connection: Connector 38-45 mm
Outlet connection: Ø 102 mm



V130 P-trap HCP

ART. no: 796 90 21
Material: Stainless steel AISI 304
Mounting: On floor
Water connection: 1/2"
Outlet connection: Ø 110 to wall
Flushing amount: 6 litres
Approved according to DIN* and VA**



V135 Floor mounted

ART. no: 796 90 27
Material: Stainless steel AISI 304
Mounting: In wall
(wall attachment enclosed)
Water connection: Connector 38-45 mm
Outlet connection: Ø102 mm



* DIN - Deutsches Institut für Normung, e. V." Approved by LGA QualiTest GmbH in Würzburg.

**VA - Danish Approval and made by ET (Danish Board of European Technical Approval for Construction Products)



V135 HCP Floor mounted

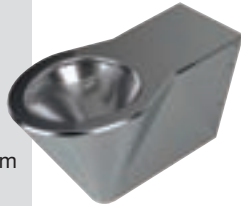
ART. no: 796 90 29

Material: Stainless steel AISI 304

Mounting: In wall
(wall attachment enclosed)

Water connection: Connector 38-45 mm

Outlet connection: Ø 102 mm



V32 S-trap

ART. no: 796 90 17

Material: Stainless steel AISI 304

Mounting: On floor

Water connection: 1 1/4"

Outlet connection: Ø 102 mm



Urinals

Purus Stainless steel urinals are preferable in environments with high demands for durability and hygiene. The range includes urinals with both water flushing system and water-free with our Purus membranes. Urinals are available as single urinals or as troughs for wall mounting. Options for adjustments are available with hidden outlets, hidden water connections and electronic sluicing.

V301 Niagara urinal trough

Material: Stainless steel AISI 304

Mounting: In wall

Water connection: 1/2"

Outlet connection: 1 1/2"

Location: Recommended location for mounting is 600-650 mm from floor

Supplied with: Fitting for mounting, Sluicing tube and front plate

Standard lengths: 1200, 1800, 2400

Available in lengths from 600-3000 mm with 200 mm interval.



V32 P-trap

ART. no: 796 90 25

Material: Stainless steel AISI 304

Mounting: On floor

Water connection: 1 1/4"

Outlet connection: Ø 102 mm



Toilet seats: Cherry

ART. no: 600954

Material: Cherry wood



Toilet seats: Silver metallic

ART. no: 600012

Material: Plastic



Toilet seats: Black

ART. no: 600803

Material: Plastic



Seat pads: Black

ART. no: 600137

Material: Plastic



V345 Water urinal, water-free

Material: Stainless steel AISI 304

Mounting: In wall

Water connection: None, but optional for 1/2" or 3/4"

Outlet connection: Ø 40 mm to wall or floor



V345 Wall urinal w/water flushing

ART. no: 799 10 51

Material: Stainless steel AISI 304

Mounting: In wall

Water connection: 1/2" or 3/4"

Outlet connection: Ø 40 mm to wall or floor



SLOP SINKS, PLASTER SEPARATORS AND SEDIMENT TRAP

Slop sink

Stainless steel slop sink are designed for public environments, mounting/installing in institutions and discharge of chemical toilets at pull-ups and camp grounds. Slop sink from Purus are designed to handle the strictest requirements for durability and hygiene. All models are supplied with bulb flushing around the entire edge and a pull-out bucket.

V15

ART. no: 803 77 15
Material: Stainless steel AISI 304
Mounting: In floor
Water connection: 1 1/4" or Ø 28/Ø 35 mm
Outlet connection: Ø 102 mm



V15 with spray nozzle

ART. no: 803 77 64
Material: Stainless steel AISI 304
Mounting: In floor
Water connection: 1 1/4" or Ø 28/Ø 35 mm
Outlet connection: Ø 102 mm
Sluicing nozzle: 1/2"



V151

ART. no: 803 78 15
Material: Stainless steel AISI 304
Mounting: In wall
Water connection: 1 1/4" or Ø 28/Ø 35 mm
Outlet connection: Ø 102 mm
 Excl. water tap



V20

ART. no: 803 78 16
Material: Acid-resistant stainless steel EN 1.4404
Mounting: In wall
Water connection: 1/2"
Outlet connection: Ø 50 mm to wall or floor
Supplied with: edge flushing, pull-out bucket grid, corrosion-resistant brackets and plastic water tap



P-water trap 110

ART. no: 192881.110
Material: PP
Capacity: 2,6 litres/second
Outlet: Ø 110 mm
 VA approved



S-Water trap 110

ART. no: 192884.110
Material: PP
Capacity: 2,6 litres/second
Outlet: Ø 110 mm
 VA approved



Plaster separator and Sediment trap

Stainless steel plaster separators and sediment traps are designed to stop the depositing of substances such as plaster/sand being flushed out through the outlet system and blocking up waste pipes. The products are often placed in connection with stainless table tops and wash troughs. Solid particles are separated from water and led back through the bottom of the collection basin.

V55 Plaster separator

ART. no: 803 79 05
Material: Acid-resistant stainless steel EN 1.4404
Mounting: 1 1/2" in basins and brackets to wall
Water connection: 1 1/2"
Outlet connection: Ø 110 mm to floor
Volume: 13 litres



Pull-out reservoir, which can be loosened with a simple grip for emptying and cleaning. The handle, which locks the reservoir, also works as carrying handle.

V220 Sediment trap

ART. no: 764 70 19
Material: Stainless steel AISI 304
Mounting: 1 1/2" in washing trough
Water connection: 1 1/2"



Supplied with removable collection basin, which is attached with a click lock.

SINK BOWLS AND WASH TROUGHS

Sink bowls and wash troughs

Stainless steel washbasins and wash troughs are designed for easy mounting in public environments. The sink bowl comes in many different designs and with the option for a bespoke adjustment according to needs. This could include the mounting of a drinking fountain, electronic fixtures and hidden connections.

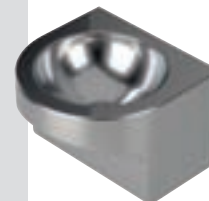
V214

ART. no: 763 12 14
Material: Stainless steel AISI 304
Mounting: On wall
Outlet: 1 1/4"
Width: 360 mm
Depth: 390 mm



V216

ART. no: 763 12 15
Material: Stainless steel AISI 304
Mounting: On wall
Outlet: Ø 40 mm to wall
Width: 400 mm
Depth: 390 mm
Height: 280 mm



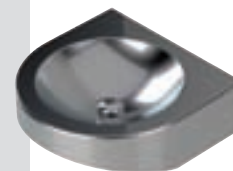
V214 Corner

ART. no: 763 12 13
Material: Stainless steel AISI 304
Mounting: On wall
Outlet: 1 1/4"
Width: 360 mm
Depth: 360 mm



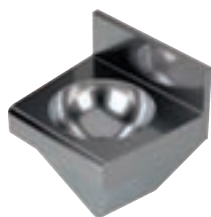
V219 HCP

ART. no: 763 12 18
Material: Stainless steel AISI 304
Mounting: On wall
Outlet: Ø 32 mm to wall
Width: 400 mm
Depth: 390 mm
Height: 130mm



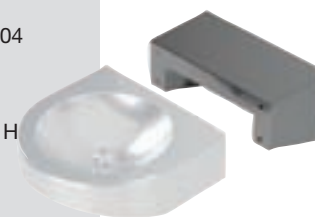
V215

ART. no: 763 12 12
Material: Stainless steel AISI 304
Mounting: On wall
Outlet: Ø 40 mm to wall
Width: 460 mm
Depth: 400 mm
Height: 585 mm



V219 extension

ART. no: 763 12 19
Material: Stainless steel AISI 304
Width: 400 mm
Depth: 200 mm
Extension sink bowl type V219 H with 200 mm



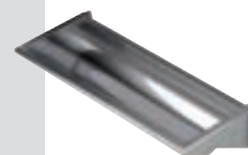
V240

Material: Stainless steel AISI 304
Mounting: On wall
Outlet: 1 1/2"
Location: 800 mm from the floor (recommended location)
Supplied with: 2 corrosion-resistant brackets
Standard lengths: 1200, 1800, 2400, 3000 mm



V246

Material: Stainless steel AISI 304
Mounting: On wall
Outlet: 1 1/2"
Location: 800 mm from the floor (recommended location)
Supplied with: 2 corrosion-resistant brackets
Standard length: 1200, 1800, 2400, 3000 mm



FITTINGS – VANDALISM-SAFE

Toilet paper holder, Jumbo-roll Ø 310 mm

ART. no: 10002
Material: Aisi 304 polished steel
Design: Plate thickness 2 mm
Secured with spin lock.
Anti-Vandalism Warranty.



Recessed soap dispenser

ART. no: 10019
Material: Aisi 304 polished steel
Design: Plate thickness 2 mm
Secured with spin lock.
Anti-Vandalism Warranty.



Recessed toilet paper holder, Jumbo-roll Ø 310 mm

ART. no: 10003
Material: Aisi 304 polished steel
Design: Plate thickness 2 mm
Secured with spin lock.
Anti-Vandalism Warranty.



Hygiene box

ART. no: 10031
Material: Aisi 304 polished steel
Design: Plate thickness 2 mm
Secured with spin lock.
Anti-Vandalism Warranty.



Toilet paper holder, 3 small rolls

ART. no: 10004
Material: Aisi 304 polished steel
Design: Plate thickness 2 mm
Secured with spin lock.
Anti-Vandalism Warranty.



Recessed hygiene box

ART. no: 10032
Material: Aisi 304 polished steel
Design: Plate thickness 2 mm
Secured with spin lock.
Anti-Vandalism Warranty.



Recessed toilet paper holder, 3 small rolls

ART. no: 10005
Material: Aisi 304 polished steel
Design: Plate thickness 2 mm
Secured with spin lock.
Anti-Vandalism Warranty.



Paper towel dispenser

ART. no: 10041
Material: Aisi 304 polished steel
Design: Plate thickness 2 mm
Secured with spin lock.
Anti-Vandalism Warranty.



Toilet paper holder, twin Midi-roll Ø 240 mm

ART. no: 10006
Material: Aisi 304 polished steel
Design: Plate thickness 2 mm
Secured with spin lock.
Anti-Vandalism Warranty.



Recessed paper towel dispenser

ART. no: 10042
Material: Aisi 304 polished steel
Design: Plate thickness 2 mm
Secured with spin lock.
Anti-Vandalism Warranty.



Recessed toilet paper holder, twin Midi-roll Ø 240 mm

ART. no: 10007
Material: Aisi 304 polished steel
Design: Plate thickness 2 mm
Secured with spin lock.
Anti-Vandalism Warranty.



Needle box

ART. no: 10051
Material: Aisi 304 polished steel
Design: Plate thickness 2 mm
Secured with spin lock.
Anti-Vandalism Warranty.



Soap dispenser

ART. no: 10018
Material: Aisi 304 polished steel
Design: Plate thickness 2 mm
Secured with spin lock.
Anti-Vandalism Warranty.



Recessed Needle box

ART. no: 10052
Material: Aisi 304 polished steel
Design: Plate thickness 2 mm
Anti-Vandalism Warranty.



FITTINGS – VANDALISM-SAFE

Needle box for downcasting

ART. no: 10053
Material: Aisi 304 polished steel
Design: Plate thickness 2 mm
 Secured with spin lock.
 Anti-Vandalism Warranty.



Hand drier

ART. no: 10500, 10501, 10502
Material: Aisi 304 polished steel
Design: Plate thickness 2 mm
 Anti-Vandalism Warranty.



Ashtray, indoors

ART. no: 10061
Material: Aisi 304 polished steel
Design: Plate thickness 2 mm
 Secured with spin lock.
 Anti-Vandalism Warranty.



Mirrors

ART. no: 10190, 10191, 10192, 10193, 10194, 10195
Material: Aisi 304 polished steel
Design: 1 mm highly finished stainless steel



Ashtray, outdoors

ART. no: 10062
Material: Aisi 304 polished steel
Design: Plate thickness 2 mm
 Secured with spin lock.
 Anti-Vandalism Warranty.



Toiletseat liquid dispenser

ART. no: 10100
Material: Aisi 304 polished steel
Design: Plate thickness 2 mm
 Secured with spin lock.
 Anti-Vandalism Warranty.



Paper holder with centre pull

ART. no: 10071
Material: Aisi 304 polished steel
Design: Plate thickness 2 mm
 Secured with spin lock.
 Anti-Vandalism Warranty.



Pictogram

ART. no: 10150-10170
Material: Aisi 304 polished steel
Design: Plate thickness 2 mm with blue acryl background. Other colours can be ordered.



Recessed waste receptacle, 8 litres

ART. no: 10085 without lid
ART. no: 10086 with lid
Material: Aisi 304 polished steel
Design: Plate thickness 2 mm
 Secured with spin lock.
 Anti-Vandalism Warranty.



Waste receptacle, 24 litres

ART. no: 10081 without lid
ART. no: 10083 with lid
Material: Aisi 304 polished steel
Design: Plate thickness 2 mm
 Secured with spin lock.
 Anti-Vandalism Warranty.



Waste receptacle, 24 litres

ART. no: 10082 without lid
Material: Aisi 304 polished steel
Design: Plate thickness 2 mm
 Secured with spin lock.
 Anti-Vandalism Warranty.



Recessed waste receptacle, 33 litres

ART. no: 10088 without lid
ART. no: 10089 with lid
Material: Aisi 304 polished steel
Design: Plate thickness 2 mm
 Secured with spin lock.
 Anti-Vandalism Warranty.



Care and maintenance instructions for stainless steel

All grades of stainless steel will stain and discolour due to surface deposits and cannot be considered to be completely maintenance-free. It is best practise to ask Purus which grade of stainless steel is suitable for your project to lessen the possibility of staining and discoloration. In order to retain maximum corrosion resistance and aesthetic appeal, the surface of stainless steel must be kept clean. Provided the grade of stainless steel and the surface finish are correctly selected and cleaning schedules carried out on a regular basis then good performance and long service life can be maintained.

Normal care

Sprinkle dry powder detergent, i.e. dishwasher powder or mild scouring powder on the surface. Scrub the powder towards the metal with a moistened polish cloth or sponge. Rinse the detergent carefully with cold water, dry polish the metal surface with a dry polish cloth. In case of discolouring after drying, this indicates that the surface has not been properly cleaned, and the cleaning procedure must be repeated. In case of heavy dirt/stains, the surface might need several treatments.

Note. Do not rinse the surface with warm water, because discolouring can easily appear due to evaporating liquids. Do not let the stainless surface dry by itself.

Removal of lime deposits

Lime deposits which have accrued from evaporating of the water can be removed with one of the following solutions:

- Vinegar
- 10 % vinegar essence
- Diluted nitric acid (to one part HNO₃ add 4 part water)

Note. When treating with nitric acid, good ventilation is necessary. Moreover the same precautions should be taken as when dealing with strong acid. After treatment with some of the above methods, the surface must be carefully rinsed with cold water then after drying with a soft polishing cloth should be carried out. Always use protective gloves, glasses, masks and read manufacturer's instructions before application.

Removal of rust spots

Rust spots that have been left on the surface for a short period, can normally be removed by the use of a mild scouring powder. The rust spot is removed by being lightly rubbed with dry scouring powder in conjunction with a moistened polishing cloth, then rinsed with cold water and dried with a soft cloth.

In case of rust spots that have been left on the surface for a long period, normally burnt in corrosion will appear in the stainless steel surface, which results in a substantial discolouring. This can sometimes occur despite of the removal of the rust in line with the above mentioned care regulations for rust spots. Even those rust spots which have been left on the surface for short periods and with non maintenance.

In those cases we recommend alternative brushing with dry nylon fibre brushes or removal of the rust spot with diluted 1 part nitric acid NO₃, diluted with 4 part water. Then rinsing and drying as stated above. Always use protective gloves, glasses, masks and read manufacturer's instructions before application.